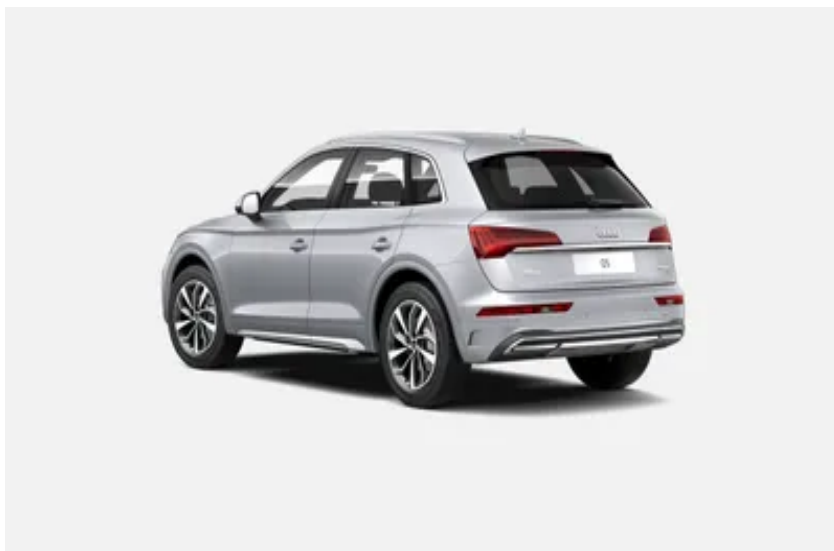




# Audi Q5

40 TDI quattro 150 kW S tronic  
\$77,331.12 <sup>1</sup>



Audi Code

**AF4NLZOR**

[audi.com.au/AF4NLZOR](https://audi.com.au/AF4NLZOR)



# Summary

**Audi Q5**  
40 TDI quattro 150 kW S tronic

\$77,331.12 <sup>1</sup>



## Exterior Colour

Floret silver, metallic

## Interior Colour

|            |                               |
|------------|-------------------------------|
| Carpet     | black                         |
| Headlining | Titanium grey                 |
| Stitching  | black with matching stitching |
| Dashboard  | black                         |

## Technical data

|                        |   |
|------------------------|---|
| Engine type            | 4-cylinder inline diesel engine with turbocharging and 12V Mild Hybrid Electric Vehicle technology (MHEV) |
| Displacement, cc       | 1,968 ccm   |
| Max. output KW         | 150 kW  |
| Max. torque, Nm at rpm | 400 / 1,750 - 3,250 Nm/min -1   |
| Transmission           | 7-speed S tronic  |
| Top speed              | 222 kph   |
| Acceleration 0-100 kph | 7.6 Seconds   |

**Audi Code**  
AF4NLZ0R

**Your configuration on audi.com.au**

[audi.com.au/AF4NLZ0R](https://www.audi.com.au/AF4NLZ0R)

**Commission number**  
775430



---

# Optional equipment

---

Floret silver, metallic

# Standard equipment

---

## Comfort

|     |   |
|-----|---|
| 6XD | Exterior mirrors power-adjustable and heated    |
| 4L6 | Auto dimming rear-view mirror                   |
| 9AQ | 3-zone deluxe electronic climate control        |
| 7E6 | Electric auxiliary air heater                   |
| 4H3 | Manual child safety lock                        |
| 4E7 | Electric rear tailgate                          |
| 4I3 | Convenience key                                 |
| 1D8 | Trailer hitch preparation                       |
| QE1 | Storage package                                 |
| 4M3 | Beverage holders                                |
| 3U4 | Luggage compartment cover                       |
| 3GD | Luggage compartment floor                       |
| 9JE | USB charging interface for rear seat passengers |

---

## Infotainment

|     |  |
|-----|--|
| 9S9 | Audi virtual cockpit                                 |
| 7UG | MMI navigation plus with MMI touch                   |
| 8RM | 8 speaker audio system                               |
| QV3 | DAB+ Digital radio                                   |
| IT3 | Audi connect plus Navigation & Infotainment services |
| IU1 | Audi smartphone interface                            |
| IW3 | Audi connect plus Security & Assistance services     |
| 9ZV | Audi phone box light (wireless charging)             |

---

## Assistance systems

|     |                           |
|-----|---------------------------|
| 6K9 | Audi pre sense city       |
| 7X2 | Audi parking system plus  |
| 7W3 | Audi pre sense rear       |
| UH2 | Audi hold assist          |
| 8T6 | Cruise control system     |
| QK1 | With multifunction camera |
| KA2 | Rear view camera          |
| 7Y1 | Audi side assist          |
| 6I1 | Audi active lane assist   |

---

## Technical & Security

|     |  |
|-----|--|
| 1KJ | Disc brakes in rear                          |
| 1LH | Disc brakes in front                         |
| 2H9 | Audi drive select                            |
| 1BA | Dynamic suspension                           |
| QZ7 | Electromechanical power steering             |
| 4UE | Airbags                                      |
| 0M5 | Fuel tank                                    |
| 4X4 | Side airbags in rear                         |
| FK2 | With additional tank for SCR (24 liters)     |
| 9P6 | Seat belt reminder                           |
| 7L8 | Start-Stop function with energy recuperation |
| 1T3 | First aid kit with warning triangle          |

---

## Paint finishes

|     |                   |
|-----|-------------------|
| VJ1 | Full paint finish |
|-----|-------------------|



---

### Wheels & Tyres

|     |  |
|-----|--|
| CN6 | 19" alloy wheels in 5-double-arm design, contrasting grey, partly polished with 235/55 tyres |
| 1S1 | Tool kit and jack  |
| 7K9 | Tyre pressure monitoring system  |
| 3F1 | Collapsible space saver spare wheel  |

---

### Headlights

|     |                                    |
|-----|------------------------------------|
| 8IT | LED headlights and LED rear lights |
| 8K4 | Separate daytime running light     |
| 8G1 | High-beam assist                   |
| 8VG | LED rear combination lamps         |

---

### Exterior design

|     |                                     |
|-----|-------------------------------------|
| 6FA | Exterior mirrors in body colour     |
| 3S1 | Roof rails in anodised aluminium    |
| 5J1 | Roof spoiler                        |
| 4ZB | Window frames in anodised aluminium |

---

### Roof systems & glazing

|     |  |
|-----|--|
| 5XK | Sun visors on driver and passenger sides       |
| 4KC | Side and rear windows in heat-insulating glass |
| 4GF | Windshield with heat-insulating glass          |

---

### Seats

|     |   |
|-----|---|
| Q1A | Standard front seats  |
| 5ZF | Front head restraints   |
| 7P1 | 4-way electric lumbar support                                     |
| 6E3 | Comfort centre armrest in front                                   |
| 3L5 | Electric front seats  |
| 3B7 | ISOFIX child seat mounting  |
| 3NT | Folding rear seat backrest with 40:20:40 split and centre armrest |

---

### Interior design

|     |   |
|-----|---|
| 6NJ | Headlining in cloth, titanium grey      |
| GT0 | Accent surfaces in matt black           |
| 5MA | Inlays in micrometallic silver          |
| 7M1 | Door sill trims with aluminium inlays   |
| 2P2 | Stainless steel loading edge protection |
| 0TD | Floor mats at front and rear            |

---

### Seats & seat upholstery

|     |                              |
|-----|------------------------------|
| N1M | Leather appointed upholstery |
|-----|------------------------------|

---

### Control elements

|     |  |
|-----|--|
| 1XW | Sport leather steering wheel with multifunction plus and shift paddles |
|-----|--|

---

### Light

|     |                          |
|-----|--------------------------|
| QQ1 | Ambient lighting package |
|-----|--------------------------|

---

### Other

|     |                               |
|-----|-------------------------------|
| GH4 | quattro with ultra technology |
|-----|-------------------------------|



# Technical data

---

| <b>Engine</b>          |   | <b>Volumes</b>                |                     |
|------------------------|---|-------------------------------|---------------------|
| Engine type            | 4-cylinder inline diesel engine with turbocharging and 12V Mild Hybrid Electric Vehicle technology (MHEV) | Luggage compartment           | 520 Litres          |
| Displacement, cc       | 1,968 ccm   | Fuel tank, approx.            | 70 Litres (approx.) |
| Max. output KW         | 150 kW  | <hr/> <b>Performance data</b> |                     |
| Max. torque, Nm at rpm | 400 / 1,750 - 3,250 Nm/min -1   | Top speed                     | 222 kph             |
| <hr/> <b>Driveline</b> |   | Acceleration 0-100 kph        | 7.6 Seconds         |
| Transmission           | 7-speed S tronic  | <hr/> <b>Fuel consumption</b> |                     |
| Layout                 | quattro   | Fuel grade                    | Diesel              |
| <hr/> <b>Weights</b>   |   |                               |                     |
| Unladen weight         | 1,880 kg  |                               |                     |
| Gross weight limit     | 2,510 kg  |                               |                     |
| Roof load limit        | 75 kg   |                               |                     |

---



---

# Contact

Dealer  
**Audi Indooroopilly**

358 Moggill Road  
Indooroopilly 4068

Phone: +61 (7) 3871 5100  
Fax: +61 (7) 3871 5200

Email: [sales@audiindooroopilly.com.au](mailto:sales@audiindooroopilly.com.au)

# Disclaimer

<sup>1</sup> Manufacturer's Recommended Drive Away Price (MRDP) is for the vehicle in the configuration and with each of the options and other features installed in the vehicle as available for sale from the listed dealer (includes Recommended Dealer Delivery charge, Government taxes and statutory charges) at the time of publishing and based on the State or Territory where the Dealer is located. If you register the vehicle in a different State or Territory, the MRDP may vary from that above as a result of differences in price components such as stamp duty or registration fees. The MRDP is based on the owner being a 'rating one' driver aged 40 with good driving record. Actual drive away price is subject to agreement with the selling dealer and will differ depending on choice of dealer and individual circumstances. Contact your Audi dealer of choice for final pricing of vehicles available from that dealer. Audi Australia Pty Ltd does not warrant the accuracy of any of this information as applicable to your particular circumstances and to the extent permitted by law is not liable for any claims or losses of any nature, including, but not limited to, damages, expenses, lost profits, punitive, special, indirect or consequential losses/damages caused by reliance on this information.

<sup>2</sup> Fuel consumption figures according to ADR 81/02 derived from laboratory testing. Factors including but not limited to driving style, road and traffic conditions, environmental influences, vehicle condition and accessories fitted (including without limitation, wheel size fitted), will in practice in the real world lead to figures which generally differ from those advertised. Advertised figures are meant for comparison amongst vehicles only.

<sup>3</sup> Availability of vehicles at individual dealers is based on Audi Australia records at the time of publication. Real time availability cannot be guaranteed and should be confirmed with individual dealers. Images are digitally generated according to exact vehicle specifications from factory systems of the vehicles available for sale at the specified dealers, and may display overseas configurations. Prices displayed are the Manufacturer's Recommended Drive Away Price for the individual vehicles (including optional equipment fitted)<sup>1</sup>. Contact the selling dealer for details on any specific vehicle, final dealer pricing, or financing information.

While every effort has been made to ensure that the information on this site is correct and up to date, Audi Australia Pty Ltd (ABN 86 077 092 776) ("Audi") does not represent or warrant the completeness, accuracy or availability of such information. Further, Audi does not guarantee continuous, uninterrupted or secure access to this site. You acknowledge and agree that access to, and use of, the site (including the software operating in connection with the site) may be interfered with by numerous factors outside of Audi's control. To the maximum extent permitted by law, Audi does not accept any liability for damages of any kind or otherwise resulting from the access or use of this site and its contents. The services offered on this site are intended to merely provide a guide only and further information should be ascertained from Authorised Audi Dealers.

Persons accessing this site from outside of Australia should take note that this site is intended for use only within Australia.

Audi reserves the right to discontinue or change any of the models, prices, colours, materials, equipment or other specifications or configurations referred to on this site at any time without notice. All colours are a general guide only, as website reproduction processes cannot reproduce the actual exterior colour appearance. Some of the equipment shown or referred to in this site may only be available as an option at extra cost. Always consult an Authorised Audi Dealer for the latest information about an Audi product and its availability before placing an order. All prices specified on this site are in Australian dollars. All information on this site is protected by copyright and other intellectual property rights. No images, text or other content from this site may be distributed or reproduced without prior written approval from either Audi Australia or its parent AUDI AG, where applicable.