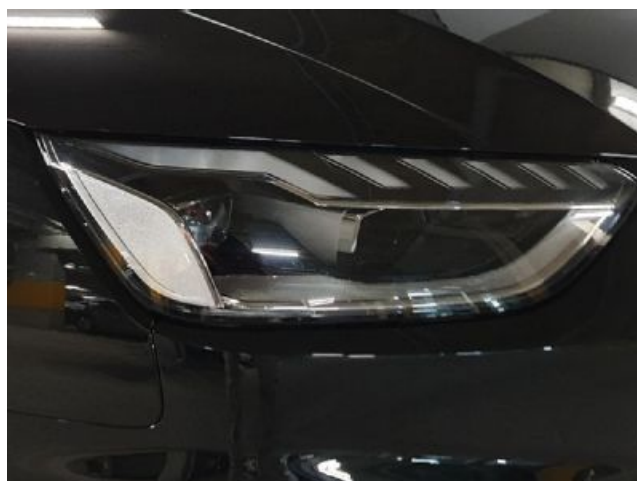
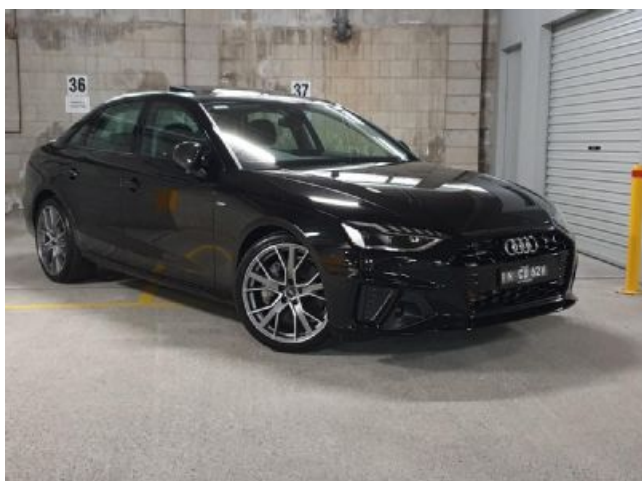




# Audi A4 Sedan

S line 45 TFSI quattro S tronic

\$84,990.00 <sup>1</sup>



Audi Code

**AC48108J**

[audi.com.au/AC48108J](https://www.audi.com.au/AC48108J)



# Summary

---

## Audi A4 Sedan

S line 45 TFSI quattro S tronic

\$84,990.00 <sup>1</sup>

---

## Exterior Colour

Mythos black, metallic

## Interior Colour

Carpet	Black
Headlining	Titanium grey
Stitching	Black with matching stitching
Dashboard	Black

---

## Technical data

Engine type	4-cylinder petrol with direct fuel injection, turbo-charging and 12V Mild Hybrid Electric Vehicle technology (MHEV)
Displacement, cc	1,984 ccm
Max. output KW	183 kW
Max. torque, Nm at rpm	370 / 1,600 - 4,500 Nm/min -1
Transmission	7-speed S tronic
Top speed	250 km/h
Acceleration 0-100 kph	5.8 s



---

## Further Information

Car type	Used car
Mileage	2,022 km

---

<b>Warranties</b>	No
-------------------	----

---

**Audi Code**  
AC48108J

## Your configuration on audi.com.au

[audi.com.au/AC48108J](https://www.audi.com.au/AC48108J)

**Commission number**  
763316

# Optional equipment

---

Mythos black, metallic

---

Carbon and black package

---

Carbon rear spoiler

---

19" Audi Sport alloy wheels in 5-V-spoke star design, titanium look, gloss turned finish with 245/35 tyres

---

Exterior mirrors in carbon

---

Rear spoiler in carbon

---

Black styling package

---

Electric glass sunroof

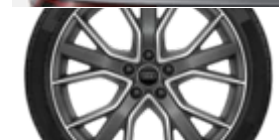
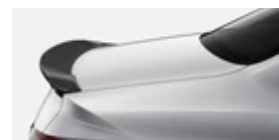
---

Heated front seats

---

Inlays in carbon twill

---





# Standard equipment

---

## Comfort

6XL	Exterior mirrors with heating, folding and auto dimming with memory, and kerb side function on the passengers side
4L6	Auto dimming rear-view mirror
9AQ	3-zone deluxe electronic climate control
4H3	Child safety lock
4E2	Gesture-controlled luggage compartment lid
4I3	Convenience key
QE1	Storage package

---

## Infotainment

9S9	Audi virtual cockpit
7UG	MMI navigation plus with MMI touch
9VD	Audi sound system
QV3	DAB+ Digital radio
IT3	Audi connect plus Navigation & Infotainment services
IU1	Audi smartphone interface
IW3	Audi connect plus Security & Assistance services
9ZV	Audi phone box light (wireless charging)

---

## Assistance systems

6K8	Audi pre sense city
7X2	Audi parking system plus
7W3	Audi pre sense rear
UH2	Audi hold assist
8T6	Cruise control system
QK1	With multifunction camera
KA2	Rear view camera
7Y1	Lane change warning

---

## Technical & Security

1KJ	Disc brakes in rear
1LF	Disc brakes, front
2H9	Audi drive select
1BE	Sport suspension
6Y2	Speed limiter
QZ7	Electromechanical power steering
4UE	Airbags
4X4	Side airbags in rear
9P6	Seat belt reminders
7L8	Start-Stop function with energy recuperation
1T3	First aid kit with warning triangle

---

## Wheels & Tyres

1S1	Tool kit and jack
7K9	Tyre pressure loss indicator
1G5	Space-saving spare wheel

---

## Headlights

8IT	LED headlights and LED rear lights with dynamic rear indicators
8VM	LED rear combination lamps with dynamic turn signal

---

## Exterior design

6FA	Exterior mirrors in body colour
2K7	Reinforced bumpers

---

## Roof systems & glazing

5XK	Sun visors on driver's and passenger side
4KC	Heat-insulating glass
4GF	Windshield with heat-insulating glass



---

### Seats

Q1D	Sport front seats
5ZF	Front head restraints
7P1	4-way electric lumbar support
6E3	Comfort centre armrest in front
3L4	Electric front seats with lumbar support and memory function for driver
3B7	ISOFIX child seat mounting
3NT	Folding rear seat backrest with 40:20:40 split and centre armrest

---

### Interior design

6NJ	Headlining in cloth, titanium grey
GT6	Accent surfaces, gloss black look
VT5	Illuminated door sill trims with aluminium inlays and S logo
OTD	Floor mats at front and rear

---

### Seats & seat upholstery

N1F	Leather appointed trim
-----	------------------------

---

### Control elements

1XW	Sport leather steering wheel with multifunction plus and shift paddles
-----	--

---

### Light

QQ1	Ambient lighting package
-----	--------------------------

---

### Other

0G7	tiptronic
GH4	quattro with ultra technology
6EP	Additional stone guard body covers



# Technical data

---

<b>Engine</b>		<b>Volumes</b>	
Engine type	4-cylinder petrol with direct fuel injection, turbo-charging and 12V Mild Hybrid Electric Vehicle technology (MHEV)	Luggage compartment	460 l
Displacement, cc	1,984 ccm	Fuel tank, approx.	58 l
Max. output KW	183 kW	<hr/> <b>Performance data</b>	
Max. torque, Nm at rpm	370 / 1,600 - 4,500 Nm/min -1	Top speed	250 km/h
<hr/> <b>Driveline</b>		Acceleration 0-100 kph	5.8 s
Transmission	7-speed S tronic	<hr/> <b>Fuel consumption</b>	
Layout	quattro	Fuel grade	95 RON Petrol
<hr/> <b>Weights</b>			
Unladen weight	1,620 kg		
Gross weight limit	2,110 kg		
Roof load limit	90 kg		

---



---

# Contact

Dealer  
**Audi Sutherland**

668 Old Princes Highway  
Sutherland 2232

Phone: +61 (2) 8536 2888  
Fax: +61 (2) 9545 5100

Email: [newsales@audisutherland.com.au](mailto:newsales@audisutherland.com.au)

# Disclaimer

<sup>1</sup> Drive Away price is for the State or Territory where the Dealer is located. If you register the vehicle in a different State or Territory, the advertised Drive Away price may vary from that above as a result of differences in price components such as stamp duty or registration fees.

Information relating to the vehicle's price, images, mileage, stock ID and status of the vehicle as a demonstrator vehicle, used vehicle or certified pre-owned vehicle have been supplied by the selling Audi Dealer. Audi Australia Pty Ltd does not warrant the accuracy of any of this information and to the extent permitted by law is not liable for any claims or losses of any nature, including, but not limited to, damages, expenses, lost profits, punitive, special, indirect or consequential losses/damages caused by reliance on this information. Description of the vehicle's standard and optional/special equipment and technical data correspond to those features of the vehicle as at the date of first delivery of the vehicle when it was new; however, changes may have been made to the vehicle since that time. Please contact the selling Audi Dealer to confirm the current equipment configuration and technical data of the vehicle as at the date of inquiry.

<sup>2</sup>Fuel consumption figures according to ADR 81/02 derived from laboratory testing. Factors including but not limited to driving style, road and traffic conditions, environmental influences, vehicle condition and accessories fitted (including without limitation, wheel size fitted), will in practice in the real world lead to figures which generally differ from those advertised. Advertised figures are meant for comparison amongst vehicles only.

## Personal and Non-Commercial Use Only

Use of this website (as applicable) is for your personal and non-commercial use only. You must not, without the written approval of Audi Australia:

- modify, copy, distribute, transmit, display, perform, reproduce, publish or license any material;
- use or attempt to use any material published on the website to create any website or publication;
- mirror or frame any website or page within the website;
- use any automated process of any sort to query, access or copy any material on the website or generate or compile any document or database based on the material published on the website; or
- transfer or sell any information, functionality or products or services offered on this website;

Audi Australia may terminate your right to access and use the website at any time.

While every effort has been made to ensure that the information on this site is correct and up to date, Audi Australia Pty Ltd (ABN 86 077 092 776) ("Audi") does not represent or warrant the completeness, accuracy or availability of such information. Further, Audi does not guarantee continuous, uninterrupted or secure access to this site. You acknowledge and agree that access to, and use of, the site (including the software operating in connection with the site) may be interfered with by numerous factors outside of Audi's control. To the maximum extent permitted by law, Audi does not accept any liability for damages of any kind or otherwise resulting from the access or use of this site and its contents. The services offered on this site are intended to merely provide a guide only and further information should be ascertained from Authorised Audi Dealers.

Persons accessing this site from outside of Australia should take note that this site is intended for use only within Australia.

Audi reserves the right to discontinue or change any of the models, prices, colours, materials, equipment or other specifications or configurations referred to on this site at any time without notice. All colours are a general guide only, as website reproduction processes cannot reproduce the actual exterior colour appearance. Some of the equipment shown or referred to in this site may only be available as an option at extra cost. Always consult an Authorised Audi Dealer for the latest information about an Audi product and its availability before placing an order. All prices specified on this site are in Australian dollars. All information on this site is protected by copyright and other intellectual property rights. No images, text or other content from this site may be distributed or reproduced without prior written approval from either Audi Australia or its parent AUDI AG, where applicable.